

# Born To Hula - Queens Of The Stone Age

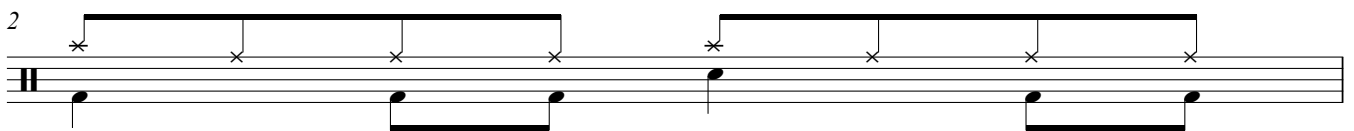
By Alex Ribchester

This lesson takes a look at the primary groove from the track "born To Hula' by Queens Of The Stone Age. It is an interesting idea in which each measure has a 32nd note drum fill over beats 3 and 4. The fill is a basic linear pattern with a familiar sticking.

Below is the actual pattern from the track, but it is always fun to change the voicing of beats 3 and 4



To make things a little bit easier to break down, I have split the original idea into two separate measures, so now the groove is in 8th notes and the fill is in 16th notes. Practice each bar individually and then combine them when you are familiar with the pattern. Enjoy!



Here is a suggested sticking for right handed players. K = kick drum. Swap the Rs and Ls around if you are left handed

